

## Making notes

### Tip

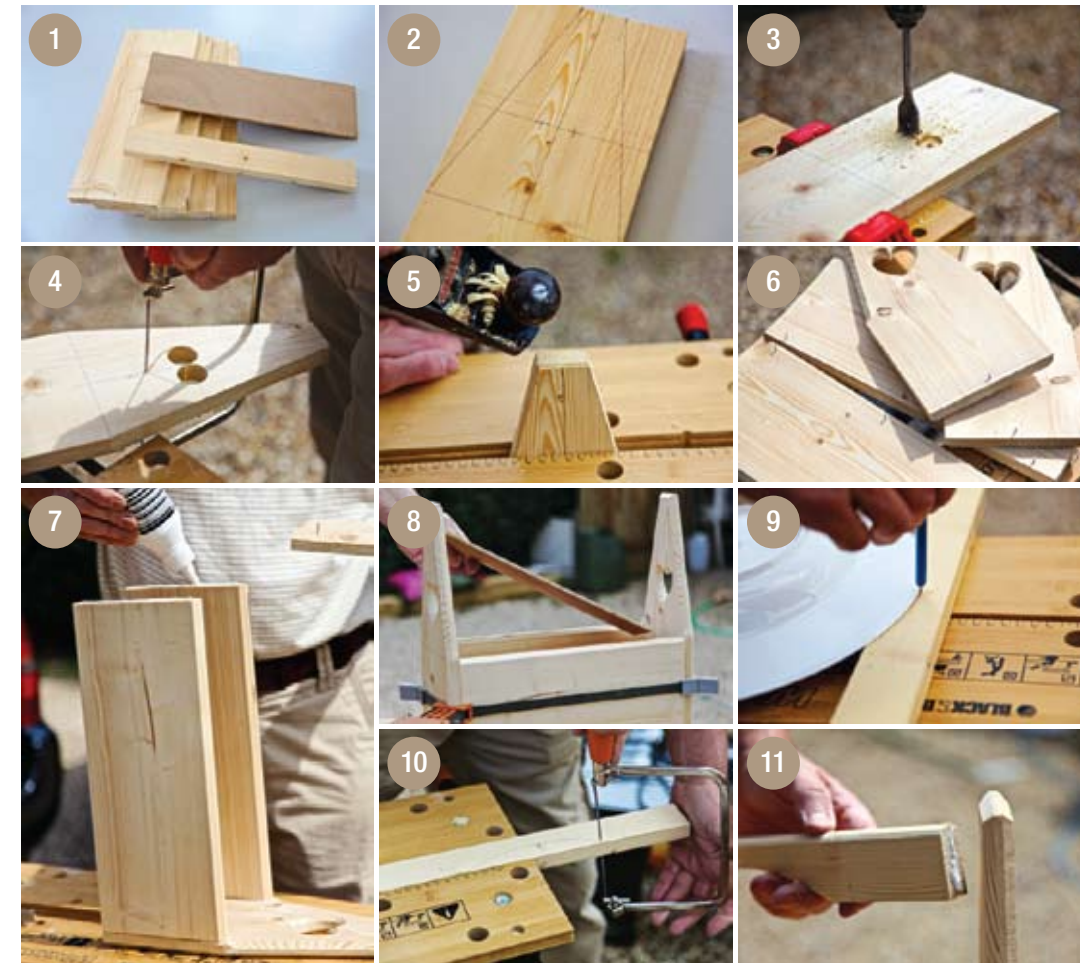
It is important to only drill half way through from each side as you drill the heart shape as this will avoid splitting the wood.

### Resources

All materials can be bought at your local DIY or hardware store.

# Garden trug

John Menlove, our own Cherry's dad, shows you how to make a simple yet gorgeous trug for all your treasured things



**You will need:**  
 Soft wood (eg. pine):  
 4x 14"x 5" x 13mm/\_"  
 for the ends and sides  
 1x 14"x 1" x 13mm/\_"  
 for the handle  
 Plywood or MDF:  
 1x 14"x 4" x 6mm/\_"  
 for the base  
 Panel pins (small nails),  
 size: 20mm/\_" & 25mm/1"  
 25mm/1" wood drill bit  
 Medium grade sandpaper  
 Pencil & ruler  
 Wood glue  
 Electric drill  
 Coping saw  
 Plane  
 Large dinner plate

- This is the wood you will require (image 1). The sizes can be varied, but these proportions seem to work and make a sturdy good sized trug (so I would stick to them!)
- Draw the diagram (p88) on to the two end pieces of wood (image 2). Draw a centre line from top to bottom, a line 5 inches up from one end which you use to draw the two angles. The width at the top of the end is 3.8cm/1.5" (2cm/\_" either side of the centre line)
- Next mark out the centre points for drilling the heart. You will use a 25mm/1" diameter drill bit so draw two crosses, one either side of the centre line and 11.5cm/4.5" from the top.
- Cut out two holes (image 3), these will form the decorative heart shape. It is important to drill half way through from each side, as this will avoid splitting the wood.
- Now you can carefully mark out the rest of the heart shape by hand using a pencil and cut it out with a coping saw (image 4).
- The edges on the trug can be beveled by using a plane or ideally a router if you have one. (image 5).
- Draw a line around the inside face of the two sides and two end pieces 1.3cm/\_" up from the bottom. Use 20mm/\_" panel pins nail them in half way as shown in the picture (image 6). This will support the base.
- You are now ready to fix your trug together using wood glue and two 25mm/1" panel pins on each face (image 7).
- You can see that I have used a picture-framing strap (image 8) to pull the trug together while the glue is setting but this 'tightener' can also be fashioned using string and a fork. You can now lower the base in and rest it on the protruding nails, which you put in place earlier.
- Now mark out the curve for the handle, I have used a large dinner plate as a template (image 9).
- Cut out with the coping saw and plane to soften the square edges, making it nicer to carry (image 10).
- Glue the handle in place (image 11) and leave it a while to make sure the glue fully sets. If you wanted, you could use 25mm/1" panel pins to secure the handle at each end.
- Following a good sanding down with medium grade sandpaper, the trug can be painted to a colour of your choice. I decided to keep mine matt white. Don't forget to sand between coats, it really does make a difference to the final finish.